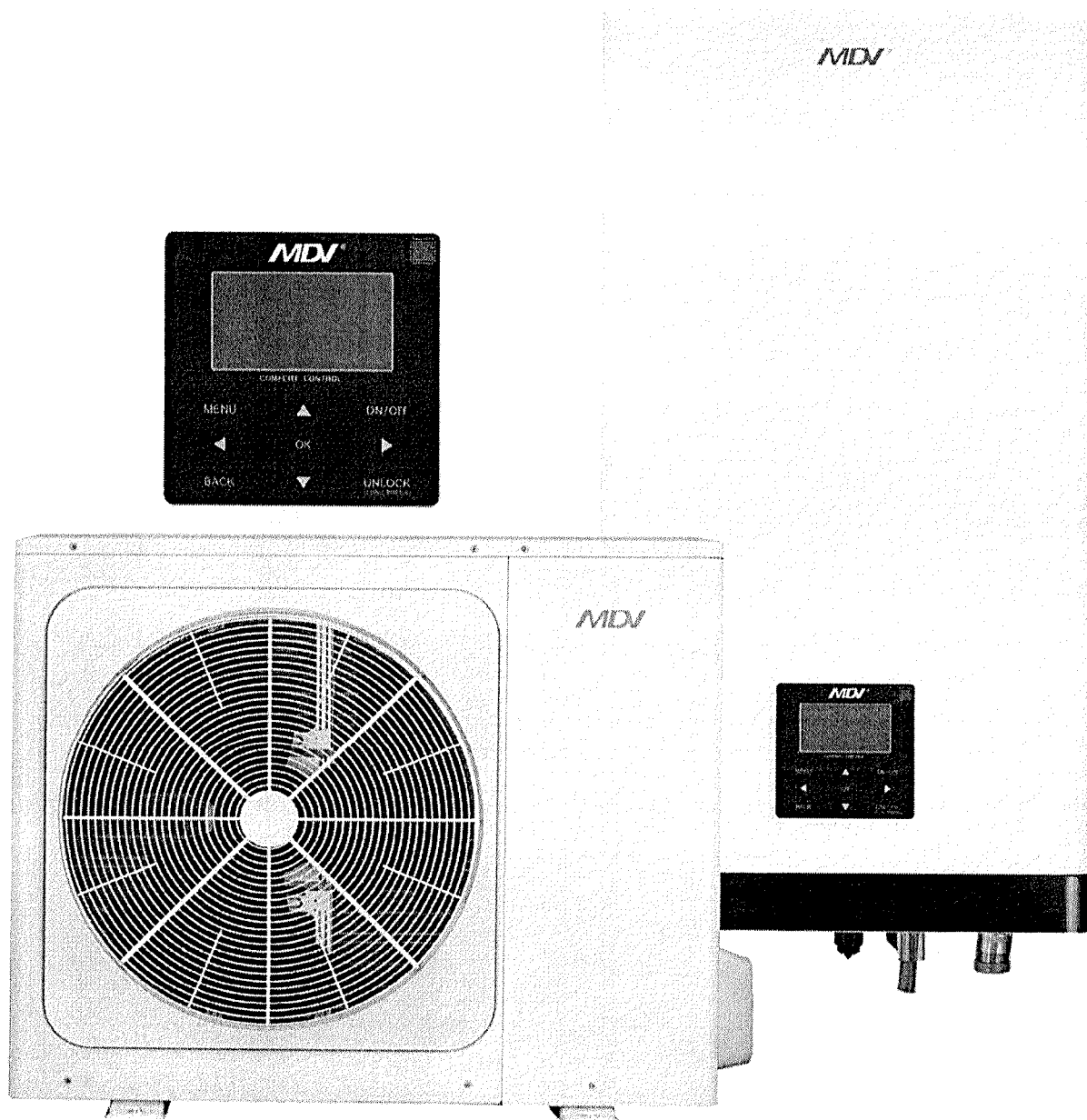


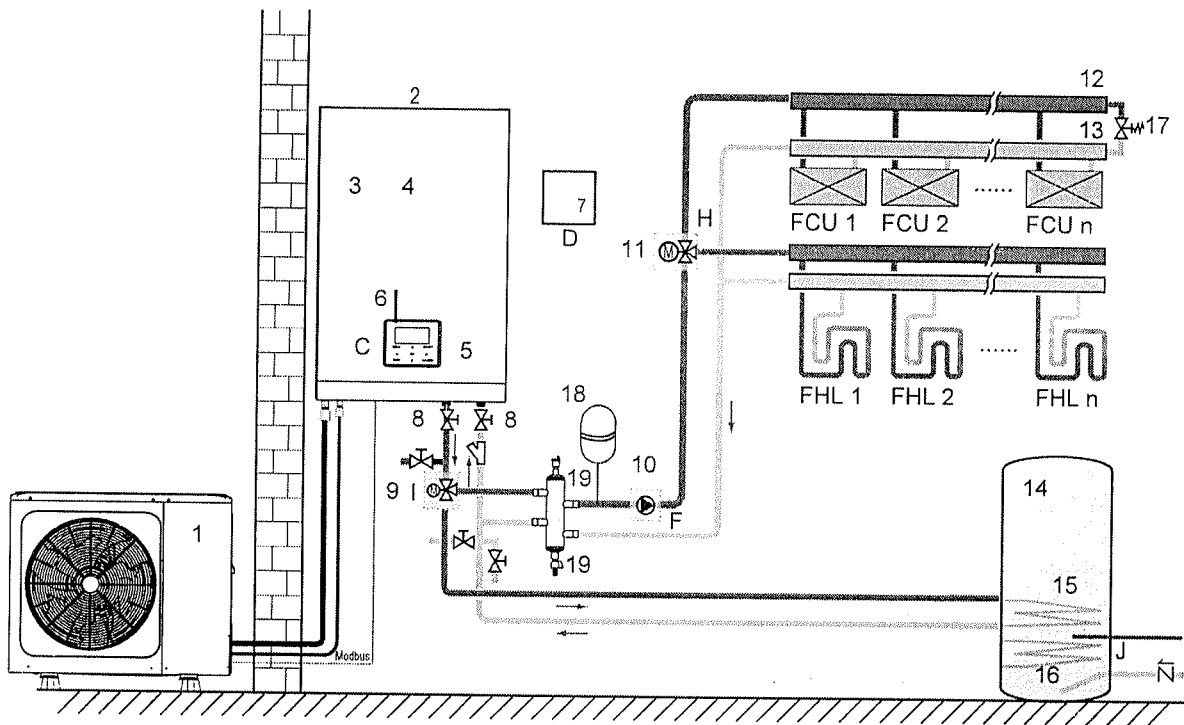
IMPACT SPLIT

SPLIT series is a set of an outdoor unit and a hydraulic module. The refrigerant piping is required, what means the installation can only be done by the professionals holding F-gas certification. Nonetheless, this solution has its assets (as compared to the monoblock systems):

- ▶ R32 refrigerant does not freeze in winter. Its temperature of freezing is -136°C .
- ▶ Outdoor units needs less space and are lighter.
- ▶ More easily accessible hydraulic parts and simplified maintenance works.



Exemplary applications



System no. 2: Installation with the Split system, using fan-coils for space cooling

A floor heating loop is applied for the space heating to provide optimum temperature distribution. While fan-coils are responsible for space cooling. Domestic hot water is taken from the DHW tank, connected to the indoor hydraulic module. The heat pump switches to the heating or cooling mode, depending on the room temperature.

In the cooling mode, the 3-way valve (11) is closed in order to prevent cold water from entering the floor heating loop. Cooling through the floor heating loops can lead to condensation on the floor and this may damage the parquet.

1	Outdoor unit	12	Distributor – supply (field supply)
2	Hydraulic module (indoor unit)	13	Distributor – return (field supply)
3	Plate heat exchanger	14	Domestic hot water tank (field supply)
4	Electric heater	15	Heat exchanger coil (field supply)
5	Circulating pump integrated with the hydraulic module	16	DHW tank electric heater (field supply)
6	Wired remote controller	17	Stop valve (field supply)
7	Room thermostat (field supply)	FHL	Floor heating loops (field supply)
8	Stop valves on supply and return (field supply)	FCU	Fan-coils (field supply)
9	Automatic 3-way valve (field supply)	18	Naczynie wzbiorcze (nie należy do wyposażenia)
10	External circulating pump (field supply)	19	Sprzęgło hydrauliczne (nie należy do wyposażenia)
11	Automatic 3-way valve (field supply)		

Specifications

Set			Air-Thermal-4A1HB	Air-Thermal-6A1HB	Air-Thermal-8A1HB
Outdoor unit			AHP5-V4W/D2N8-B	AHP5-V6W/D2N8-B	AHP5-V8W/D2N8-B
Hydraulic module			AHB-A60/ CD30GN8-B	AHB-A60/ CD30GN8-B	AHB-A100/ CDS90GN8-B
Outdoor unit power supply (voltage/phases/frequency)		(V/-/Hz)	220-240/1/50	220-240/1/50	220-240/1/50
Hydraulic module power supply (voltage/phases/frequency)		(V/-/Hz)	220-240/1/50	220-240/1/50	380-415/3/50
Heating (1) (A7/W35)	Capacity	kW	4.25	6.20	8.30
	COP	-	5.20	5.00	5.20
Heating (2) (A7/W45)	Capacity	kW	4.35	6.35	8.20
	COP	-	3.80	3.75	3.95
Cooling (3) (A35/W7)	Capacity	kW	4.70	7.00	7.40
	EER	-	3.46	3.00	3.38
Cooling (4) (A35/W18)	Capacity	kW	4.50	6.55	8.40
	EER	-	5.55	4.90	5.05
Electric heater power		kW	3	3	3/6/9
Seasonal energy efficiency class (5)	Water inlet temperature 35°C	-	A+++	A+++	A+++
	Water inlet temperature 55°C	-	A++	A++	A++
Outdoor temperature range	Cooling	°C	-5~43	-5~43	-5~43
	Heating	°C	-25~35	-25~35	-25~35
	Domestic hot water	°C	-25~43	-25~43	-25~43
Water inlet temperature range	Cooling	°C	5~25	5~25	5~25
	Heating	°C	25~65	25~65	25~65
	Domestic hot water	°C	20~60	20~60	20~60
Sound power level (outdoor unit)		dB(A)	56	58	59
Sound power level (hydraulic module)		dB(A)	38	38	42
Sound pressure level (outdoor unit) (6)		dB	44	45	46
Outdoor fan	Motor type/no. of fans	-	DC/1	DC/1	DC/1
Maximum installation length		m	30	30	30
Maximum height difference		m	20	20	20
Refrigerant (type/charge)		-/kg	R32/1.5	R32/1.5	R32/1.65
Outdoor unit	Dimensions (length/height/depth)	mm	1008×712×426	1008×712×426	1118×865×523
	Transport dimensions (length/height/depth)	mm	1065×810×485	1065×810×485	1190×970×560
Hydraulic module	Dimensions (length/height/depth)	mm	420×790×270	420×790×270	420×790×270
	Transport dimensions (length/height/depth)	mm	525×1050×360	525×1050×360	525×1050×360
Net weight (outdoor unit)		kg	58	58	75
Net weight (hydraulic module)		kg	37	37	37

(1) DB/WB 7/6°C, LWT 35°C (ΔT = 5°C)

(2) DB/WB 7/6°C, LWT 45°C (ΔT = 5°C)

(3) DB 35°C, LWT 18°C (ΔT = 5°C)

(4) DB 35°C, LWT 7°C (ΔT = 5°C)

(5) Seasonal space heating energy efficiency class tested in average climate conditions.

(6) The sound pressure level conditioned: EN12102-1

(7) Sound pressure level measured at a distance of 1 m from the unit and (1+H)/2 m (where H is the height of the unit) above the floor in the semi-anechoic chamber.

The sound pressure level is tested in the following conditions:

Outdoor air temperature 7°C DB, 85% R.H.; inlet water temperature 30°, outlet water temperature 35°C.

Outdoor air temperature 7°C DB, 85% R.H.; inlet water temperature 47°, outlet water temperature 55°C.

Air-Thermal-10A1HB	Air-Thermal-12A1HB	Air-Thermal-14A1HB	Air-Thermal-16A1HB	Air-Thermal-12A3HB	Air-Thermal-14A3HB	Air-Thermal-16A3HB
AHPS-V10W/ D2N8-B	AHPS-V12W/ D2N8-B	AHPS-V14W/ D2N8-B	AHPS-V16W/ D2N8-B	AHPS-V12W/ D2RN8-B	AHPS-V14W/ D2RN8-B	AHPS-V16W/ D2RN8-B
AHB-A100/ CDS90GN8-B	AHB-A160/ CDS90GN8-B	AHB-A160/ CDS90GN8-B	AHB-A160/ CDS90GN8-B	AHB-A160/ CDS90GN8-B	AHB-A160/ CDS90GN8-B	AHB-A160/ CDS90GN8-B
220-240/1/50	220-240/1/50	220-240/1/50	380-415/1/50	380-415/3/50	380-415/3/50	380-415/3/50
380-415/3/50	380-415/3/50	380-415/3/50	380-415/3/50	380-415/3/50	380-415/3/50	380-415/3/50
10.00	12.10	14.50	16.00	12.10	14.50	16.00
5.00	4.95	4.70	4.50	4.95	4.70	4.50
10.00	12.30	14.20	16.00	12.30	14.20	16.00
3.80	3.80	3.65	3.60	3.80	3.65	3.60
8.20	11.60	12.70	14.00	11.60	12.70	14.00
3.31	2.75	2.55	2.45	2.75	2.55	2.45
10.00	12.00	13.50	14.90	12.00	13.50	14.90
4.80	4.00	3.60	3.40	4.00	3.60	3.40
3/6/9	3/6/9	3/6/9	3/6/9	3/6/9	3/6/9	3/6/9
A+++	A+++	A+++	A+++	A+++	A+++	A+++
A++	A++	A++	A++	A++	A++	A++
-5~43	-5~43	-5~43	-5~43	-5~43	-5~43	-5~43
-25~35	-25~35	-25~35	-25~35	-25~35	-25~35	-25~35
-25~43	-25~43	-25~43	-25~43	-25~43	-25~43	-25~43
5~25	5~25	5~25	5~25	5~25	5~25	5~25
25~65	25~65	25~65	25~65	25~65	25~65	25~65
20~60	20~60	20~60	20~60	20~60	20~60	20~60
60	64	65	68	64	65	68
42	43	43	43	43	43	43
49	50	51	55	50	51	55
DC/1	DC/1	DC/1	DC/1	DC/1	DC/1	DC/1
30	30	30	30	30	30	30
20	20	20	20	20	20	20
R32/1.65	R32/1.84	R32/1.84	R32/1.84	R32/1.84	R32/1.84	R32/1.84
1118×865×523	1118×865×523	1118×865×523	1118×865×523	1118×865×523	1118×865×523	1118×865×523
1190×970×560	1190×970×560	1190×970×560	1190×970×560	1190×970×560	1190×970×560	1190×970×560
420×790×270	420×790×270	420×790×270	420×790×270	420×790×270	420×790×270	420×790×270
525×1050×360	525×1050×360	525×1050×360	525×1050×360	525×1050×360	525×1050×360	525×1050×360
75	97	97	97	112	112	112
37	39	39	39	39	39	39